



**DRIFTLESS**  
AREA LAND CONSERVANCY

# WINTERGREEN

A REGIONAL CONSERVATION INITIATIVE

Protected by community. Guided by conservation. Designed for future generations.

# WINTERGREEN PROTECTED FOREVER

In December 2025, Driftless Area Land Conservancy permanently protected 245 extraordinary acres overlooking the Lower Wisconsin State Riverway and adjoining Frank Lloyd Wright’s Taliesin Estate.

This achievement represents a rare alignment of public investment, private philanthropy, and community leadership, ensuring Wintergreen will remain a place of conservation, learning, and connection for generations to come.

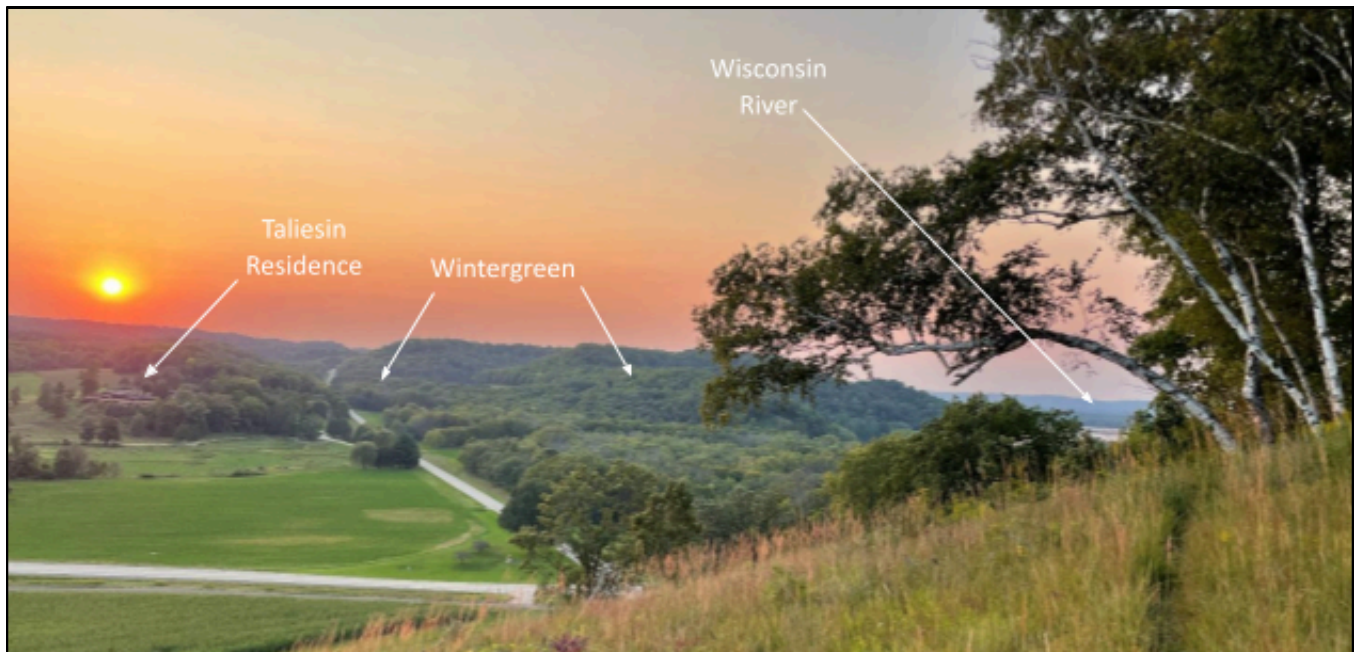
Together, donors and partners across the community transformed a once uncertain future into a shared conservation success.



## COMMUNITY INVESTMENT AND STEWARDSHIP

Funding Source	Amount
Knowles-Nelson Stewardship Program	\$1,200,000
North American Wetlands Conservation Act	\$250,000
Individual Restricted Contributions	\$1,740,270
<b>TOTAL SECURED</b>	<b>\$3,190,270</b>
<b>ACQUISITION COST</b>	<b>\$2,950,000</b>
<b>CARRY FORWARD FUNDS FOR 2026</b>	<b>\$240,270</b>

# A REGIONAL GATEWAY TO THE DRIFTLESS



---

## **Wintergreen sits at a rare intersection of ecological significance, cultural history, and public access opportunity.**

Its location overlooking the Lower Wisconsin Riverway positions Wintergreen as a natural gateway, connecting conservation lands, regional trails, cultural destinations, and community experiences.

Wintergreen is not simply a preserved property; it is a platform for expanding access to the Driftless landscape.

- **STRATEGIC LOCATION NEAR TALIESIN**
- **ANCHOR FOR THE DRIFTLESS TRAIL CORRIDOR**
- **REGIONAL DESTINATION POTENTIAL**
- **CONSERVATION-LED ADAPTIVE REUSE**

# CONSERVATION GUIDES EVERY DECISION



## GUIDING PRINCIPLES

- Protect and care for the land
- Serve the community
- Honor the site's legacy
- Invite the public to enjoy the land while planning for the future
- Explore and test the feasibility of the building uses that are financially sustainable and compatible with land care and protection
- Align operations with DALC's mission

Each phase is guided by data, collaboration, and long-term stewardship, ensuring Wintergreen evolves responsibly while remaining grounded in conservation values.

## WINTERGREEN ADVANCES THROUGH THREE COMMITMENTS:

**PROTECT THE LAND FIRST**



**LEARN BEFORE INVESTING**



**CONTINUOUS COMMUNITY  
ENGAGEMENT**

## CONCEPTS BEING CONSIDERED

The future of Wintergreen will emerge through a thoughtful exploration process, with mission-aligned concepts being evaluated for financial feasibility, operational sustainability, and community support.

### CONSERVATION AND COMMUNITY GATHERING PLACE

- Exhibits, performances, and community programs showcasing the Driftless region's ecology, culture, and history
- Community meetings and nonprofit convenings

### TRAILHEAD & OUTDOOR RECREATION GATEWAY

- Hiking trails and access to the Wisconsin River shoreline
- Center for year-round family recreation, including hiking, snowshoeing, and birdwatching
- Anchor for the Driftless Trail corridor



*Concept sketch of interactive exhibits*

### CONSERVATION COLLABORATION HUB

- DALC's Headquarters (2026)
- Shared workstations and private offices with inspiring river views
- Shared space with other organizations
- Corporate retreats, conferences, and celebrations

# THOUGHTFUL ACTIVATION

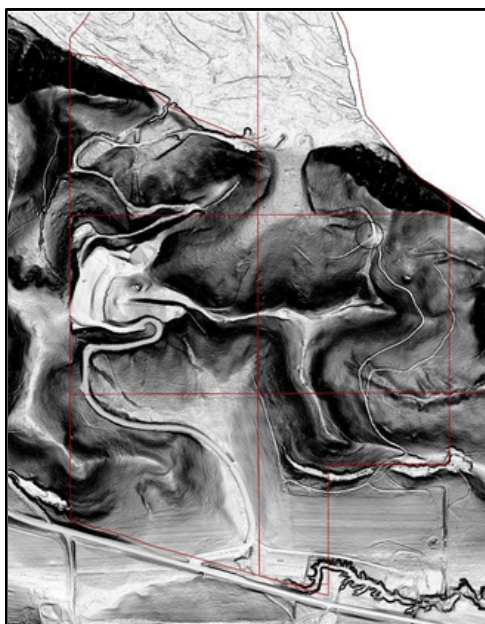
## Wintergreen Strategic Activation Framework



- Headquarters relocation
- Public access rollout
- Initial land restoration

- Structural assessment of the building & mechanicals review
- Feasibility analysis
- Community engagement
- Business model refinement
- Multi-level cost projections

- Renovations
- Program expansion
- Trail network development



Left to right: Local experts in architecture, engineering & planning review Wintergreen's original construction plans; LiDAR imagery to help investigate the site's cultural resources; and DALC Conservation Director Stephanie Judge sharing the site's fire history during an Earth Week visit by Wisconsin Governor Tony Evers

# THE LAND LEADS THE VISION



Land stewardship remains the guiding framework for all decisions at Wintergreen.

## **EARLY PRIORITIES INCLUDE:**

- Ecological assessments of rare species & communities onsite
- Cultural resource surveys
- Invasive species assessment
- Conceptual trail design

## **PHASED RESTORATION:**

- Design & implement phased restorations of the site's most imperiled communities:
  - Prairie & oak savanna remnants
  - Oak woodlands
  - Pine relics
  - Floodplain forests
- Prioritize restoration and management to enhance critical habitat for rare species

*Every future use begins with protecting, understanding & caring for the land.*



*Concept sketch of lobby with interactive exhibits*

---

## JOIN THE NEXT PHASE

Together, we protected Wintergreen. Now we shape what it becomes. As planning continues, DALC invites partners to help guide the future:



### **Experience Wintergreen**

Visit, explore, share feedback, and witness the transformation.



### **Philanthropic Partnership**

Support future phases aligned with conservation and community impact.



### **Strategic Collaboration**

Mission-aligned programming, cultural initiatives, and regional partnerships.

*Wintergreen builds upon more than 25 years of trusted conservation leadership by Driftless Area Land Conservancy.*

Explore action and giving opportunities at  
**[driftlessconservancy.org](https://driftlessconservancy.org)**

Driftless Area Land Conservancy | [info@driftlessconservancy.org](mailto:info@driftlessconservancy.org) | 608-930-3252

---