

WINTERGREEN

A GATEWAY TO THE DRIFTLESS LANDSCAPE

Protected by community. Guided by conservation. Designed for future generations.



DRIFTLESS
AREA LAND CONSERVANCY

WINTERGREEN IS NOW PROTECTED FOREVER!

In December 2025, Driftless Area Land Conservancy permanently protected 245 extraordinary acres overlooking the Lower Wisconsin State Riverway and adjoining Frank Lloyd Wright's Taliesin Estate.

This achievement represents a rare alignment of public investment, private philanthropy, and community leadership, ensuring Wintergreen will remain a place of conservation, learning, and connection for generations to come.

Together, donors and partners across the community transformed a once uncertain future into a shared conservation success.



COMMUNITY INVESTMENT AND STEWARDSHIP

Funding Source	Amount
Knowles-Nelson Stewardship Program	\$1,200,000
North American Wetlands Conservation Act	\$250,000
Individual Restricted Contributions	\$1,740,270
TOTAL SECURED	\$3,190,270
ACQUISITION COST	\$2,950,000
CARRY FORWARD FUNDS FOR 2026	\$240,270

A REGIONAL GATEWAY TO THE DRIFTLESS



Wintergreen sits at a rare intersection of ecological significance, cultural history, and public access opportunity.

Its location overlooking the Lower Wisconsin Riverway positions Wintergreen as a natural gateway, connecting conservation lands, regional trails, cultural destinations, and community experiences.

Wintergreen is not simply a preserved property; it is a platform for expanding access to the Driftless landscape.

- **STRATEGIC LOCATION NEAR TALIESIN**
- **ANCHOR FOR DRIFTLESS TRAIL CORRIDOR**
- **REGIONAL DESTINATION POTENTIAL**
- **CONSERVATION-LED ADAPTIVE REUSE**

CONSERVATION LEADS EVERY DECISION



GUIDING PRINCIPLES

- Protect and care for the land
- Serve the community
- Honor the site's legacy
- Invite the public to enjoy the land while planning for the future
- Explore and test the feasibility of the building uses that are compatible with land care and protection
- Align operations with the conservation mission

Each phase is guided by data, collaboration, and long-term stewardship, ensuring Wintergreen evolves responsibly while remaining grounded in conservation values.

WINTERGREEN ADVANCES THROUGH THREE COMMITMENTS:

PROTECT THE LAND FIRST



LEARN BEFORE INVESTING



ACTIVATE THE COMMUNITY

CONCEPTS FOR A REGIONAL GATEWAY

Wintergreen's future will emerge through thoughtful exploration of mission-aligned uses:

TRAILHEAD & OUTDOOR RECREATION HUB

- Hiking trails and access to the Wisconsin River shoreline
- Center for year-round family recreation, including hiking, snowshoeing, and birdwatching

CULTURAL & EDUCATIONAL CENTER

- Exhibits, performances, and community programs showcasing the Driftless region's ecology, culture, and history
- Regional gateway to the Driftless and the Lower Wisconsin Riverway



Concept sketch of interactive exhibits

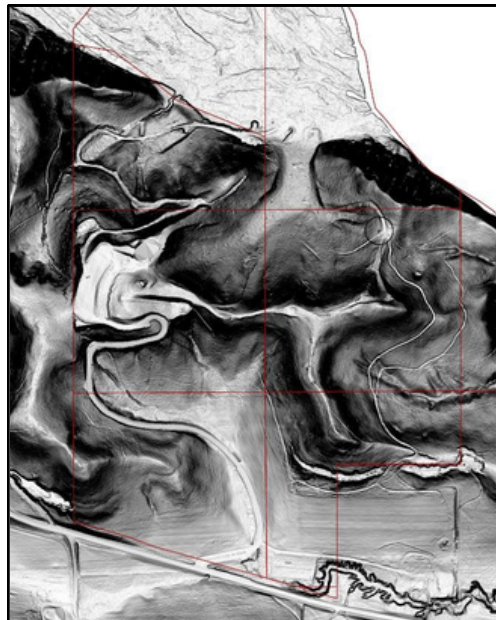
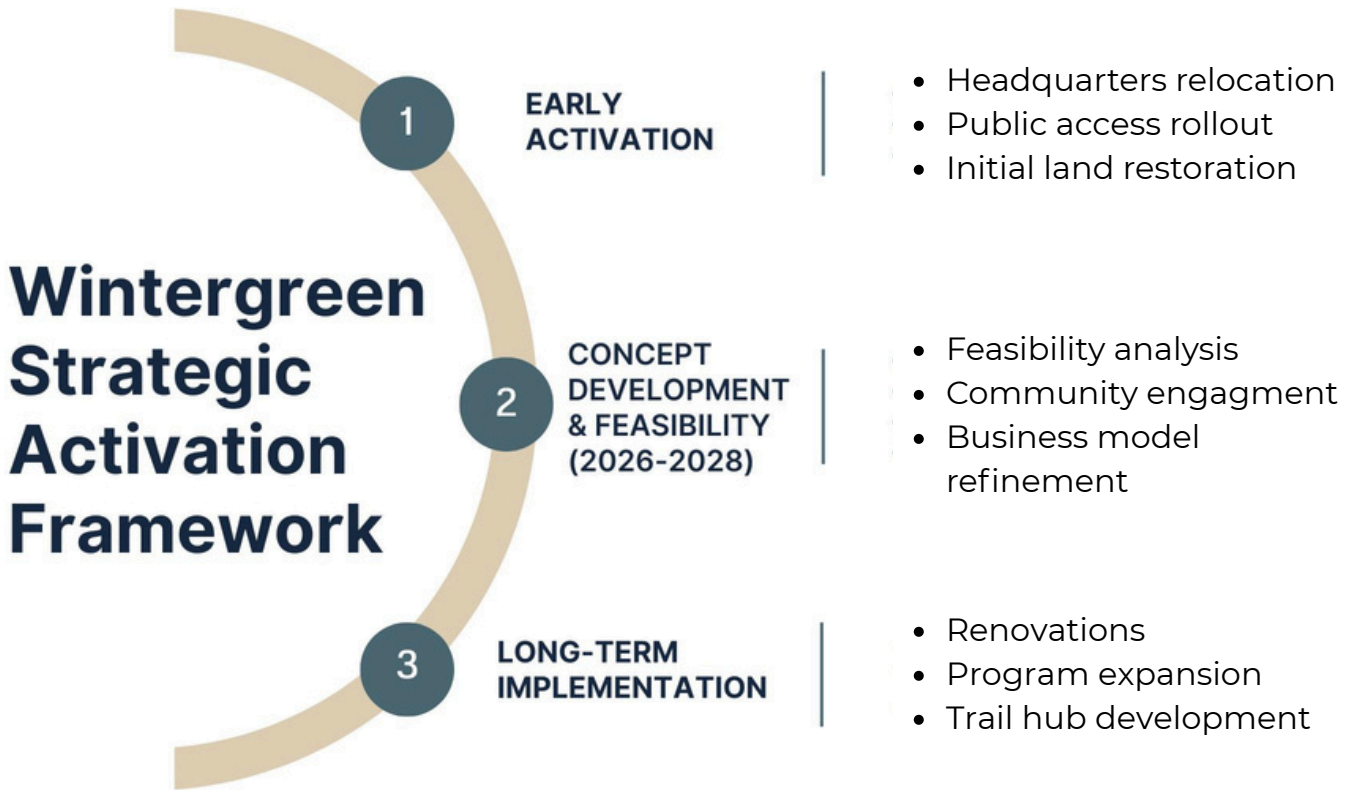
OFFICE & COWORKING HUB

- DALC's Headquarters (2026)
- Shared workstations and private offices with inspiring river views
- Shared space with other organizations

EVENT SPACE, REVENUE GENERATION

- Corporate retreats, conferences, and celebrations (capacity: 150–300 guests)
- Existing Class B liquor license, commercial kitchen, and banquet-ready spaces

THOUGHTFUL ACTIVATION



Left to right: Local experts in architecture, engineering & planning review Wintergreen's original construction plans; LiDAR imagery to help investigate the site's cultural resources; and DALC Conservation Director Stephanie Judge sharing the site's fire history during an Earth Week visit by Wisconsin Governor Tony Evers

THE LAND LEADS THE VISION



Land stewardship remains the guiding framework for all decisions at Wintergreen.

EARLY PRIORITIES INCLUDE:

- Ecological assessments of rare species & communities onsite
- Cultural resource surveys
- Invasive species assessment
- Conceptual trail design

PHASED RESTORATION:

- Design & implement phased restorations of the site's most imperiled communities:
 - Prairie & oak savanna remnants
 - Oak woodlands
 - Pine relics
 - Floodplain forests
- Prioritize restoration and management to enhance critical habitat for rare species

Every future use begins with protecting, understanding & caring for the land.

BE PART OF WHAT COMES NEXT AT WINTERGREEN



JOIN THE NEXT PHASE

Together, we protected Wintergreen. Now we shape what it becomes. As planning continues, DALC invites partners to help guide the future through:



Experience Wintergreen

Visit, explore, and witness the transformation.



Philanthropic Partnership

Support future phases aligned with conservation and community impact.



Strategic Collaboration

Mission-aligned programming, cultural initiatives, and regional partnerships.

*Wintergreen builds upon more than 25 years of trusted conservation leadership by
Driftless Area Land Conservancy.*

Explore action and giving opportunities at
driftlessconservancy.org

Driftless Area Land Conservancy | info@driftlessconservancy.org | 608-930-3252